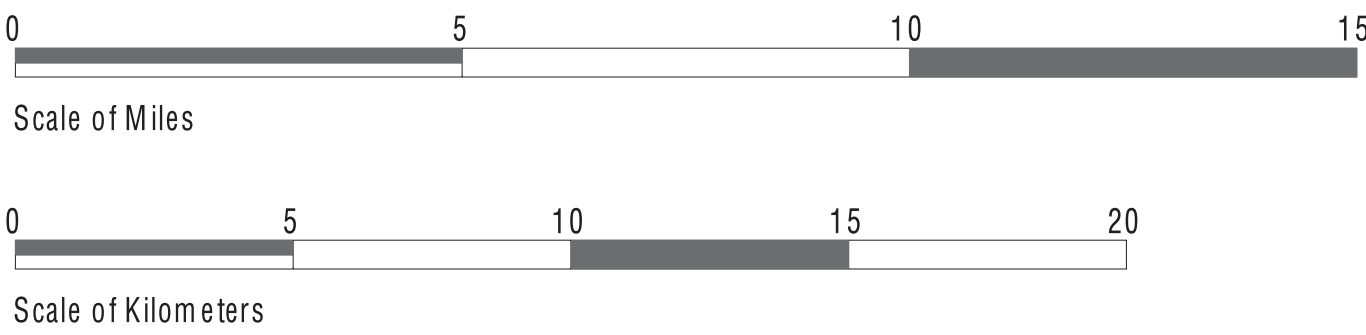
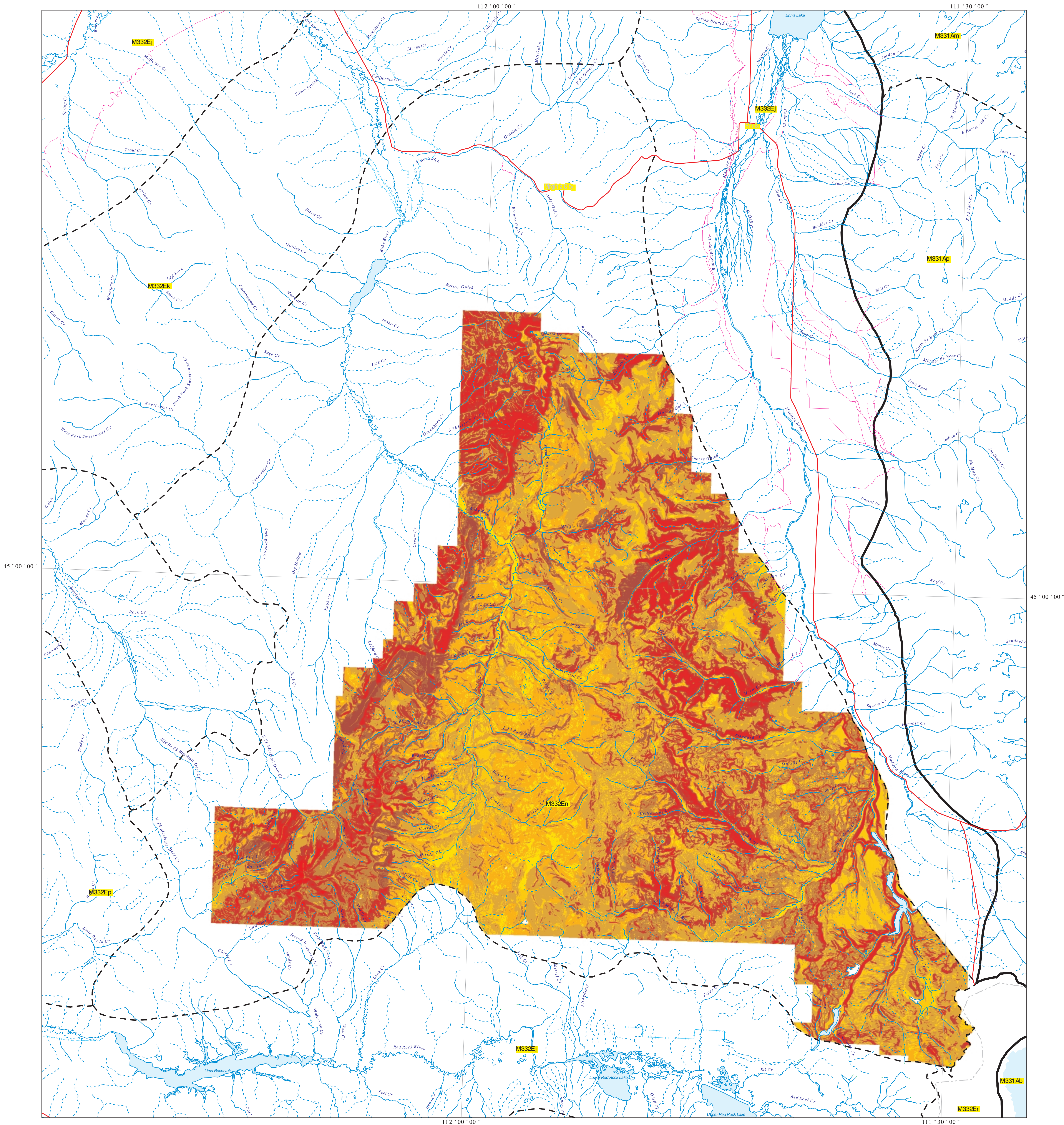
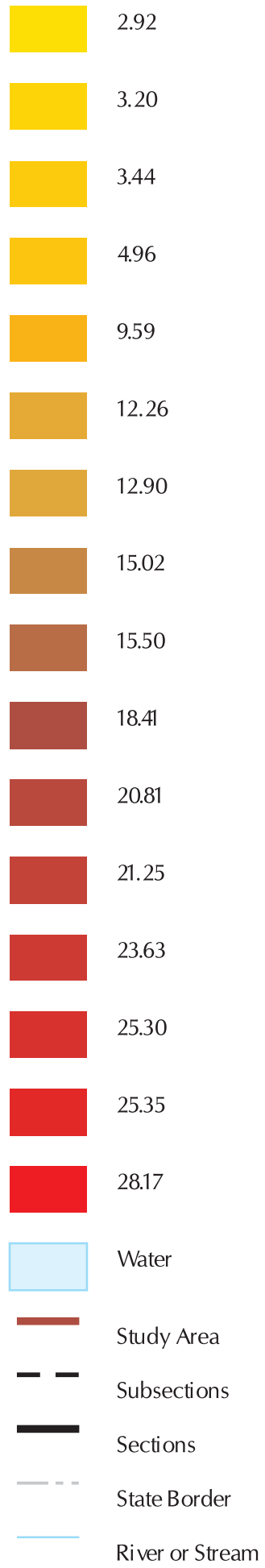




Gravelly / Snowcrest Mountains - Subsection M332En
Beaverhead Mountains - Section M332
Predicted Erosion - WEPP Model
High Intensity Fire - 8 Percent Cover

NRCS
Natural Resources
Conservation Service

Erosion Prediction
Tons per Acre/Yr.



Albers Equal Area Projection Scale 1:136000

The FS WEPP interface to the WEPP model was developed by the Soil and Water Engineering group of the U.S. Forest Service, Rocky Mountain Research Station, Bill Elliot, Project Leader. Section and Subsections delineated by Region One USFS according to National Ecological Mapping Hierarchy. Other base data from various source; U.S. Census TIGER files, ESRI ARCUSA 1:2M cdrom.



Montana State Library - 1515 East 6th Avenue
Helena, Montana - (406) 444-3357